

Here are your weekly flyers:

[Newsletter 11.3.23.pdf](#)

Thanks for a nice week!

We are looking forward to the OSO's Fall Festival this Saturday. I hope to see you there!

By this time, you should have received an invitation to family-teacher conferences. These are important meetings where the teacher and any support staff will keep you informed on what is happening in class and where your child is progressing. We will have translation services available for all that need them. Just let us know in advance so we can prepare.

Drop Off Reminders

- Students should not be leaving the car from the driver's side.
- Adults should not be leaving the car to assist students. If you need to assist your child, please park in a parking spot and walk them up.

Have a nice weekend!



Oswegatchie Elementary School Newsletter

470 Boston Post Road, Waterford, CT 06385

Phone: 860-442-4331 Fax: 860-447-6261

osw.waterfordschools.org



November 3, 2023

School Hours 8:25 a.m. - 3:10 p.m.



Dear OSW Parents,

The Waterford Lions Kid's Sight Vision Screening for Pre-K, Kindergarten and Grade 1 Oswegatchie students will occur on Tuesday, November 14th.

ANNUAL PRE K INFLUENZA VACCINATION is a REQUIREMENT for school attendance, and proof must be provided in writing prior to December 31, 2023 to allow your child to return from the Holiday break. Please schedule your PreK student for their vaccination early.

Thank you,
Wendy Doyon RN
School Nurse

SAVE THE DATE:

*****Updated dates are underlined*****

Nov. 4 Oswegatchie Fest 12-3pm

Nov. 4 Craft Fair 10-3pm

Nov. 4-11 Scholastic Book Fair

Nov. 8 Veteran's Day Celebration 9am

Nov. 14 Pre-K, K & 1st Grade

Vision Screening

Nov. 14 OSO Meeting 5:15pm

**Nov. 15 School Safety Forum 6pm—
WHS**

Nov. 18 Turkey Trot 9:30—WHS

This year I am thankful
for _____.



Joseph Macrino

Principal

jmacrino@waterfordschools.org

Kathy Kerwin

Secretary

kkerwin@waterfordschools.org

Wendy Doyon

School Nurse

wdoyon@waterfordschools.org



BAKERS NEEDED!

This year's **Holiday Craft & Vendor Show** will be held on Saturday, **November 4th**, and a favorite part of the fair is the **OSO Bake Sale**.

**We need donations of baked goods
from our families!**

Favorites include:

**Individually Wrapped Breads, Pies, Cupcakes, Bars,
Fudge/Candies and Cookies**

Please drop off baked goods to the school on Friday or Saturday
before 10 am.

We also need volunteers who can help for an hour or two on the
day of the sale.

**Please let us know if you can contribute either food or time to
ckcraftcreations@yahoo.com or 860.961.6456**



**NOV 4TH
12-3PM**

OSWEGATCHIE

fest



**Music by Joy Blooms at Noon!
Live animals, kids' activities, Tai Chi,
nature hike, scavenger hunt,
arts & crafts and more on site at
Oswegatchie School!**

**Denison Pequotsepos Nature Center,
Daily Market Farm, CT Audubon,
Waterford Land Trust, Waterford Library,
Save the River-Save the Hills
Waterford Youth & Family Services**



**This is a FREE event for our
OSW Community!**



2023 Annual Oswegatchie School Holiday Craft & Vendor Show

Saturday, November 4th 10 am - 3 pm

**OSWEGATCHIE ELEMENTARY
SCHOOL**

470 Boston Post Rd
Waterford, CT 06385

**COME AND ENJOY OVER 40 ARTISANS & VENDORS
BAKE SALE, RAFFLES, & SCHOLASTIC BOOK SALE**

FOR MORE INFORMATION:

Christina Knutson
860.961.6456

ckcraftcreations@yahoo.com

Sponsored by the Oswegatchie School Organization

SCHOLASTIC BOOK FAIR

More Bookjoy, less hassle—with eWallet!

This year, say goodbye to giving your kids crumpled bills and loose change...and hello to **eWallet**, a super-convenient, secure digital payment account, for the Scholastic Book Fair. Setting up an eWallet for your child empowers them to choose their own books and effortlessly check out during the Best Week Ever at their school. And any leftover funds can be saved for future Fairs. Now, that's a win-win!



Create Account



Add Funds



Share with Family
and Friends



Shop



Visit our school's Book Fair homepage to get started:



SCHOLASTIC BOOK FAIR

More Bookjoy, less hassle—with eWallet!

This year, say goodbye to giving your kids crumpled bills and loose change...and hello to **eWallet**, a super-convenient, secure digital payment account, for the Scholastic Book Fair. Setting up an eWallet for your child empowers them to choose their own books and effortlessly check out during the Best Week Ever at their school. And any leftover funds can be saved for future Fairs. Now, that's a win-win!



Create Account



Add Funds



Share with Family
and Friends



Shop



Visit our school's Book Fair homepage to get started:





OSO Updates—11/3/23

Events and Meetings:

**Book Fair
Next Week!**

Tomorrow! November 4, "Oswegatchie Fest" at school 12pm-3pm
Free Fun on school grounds! See flyer in school newsletter.

Tomorrow! November 4, "Holiday Craft Fair" in school gym & café
Start your Holiday Shopping and support your school!

Sat—Friday, Nov 4 - Nov 10, "Scholastic Book Fair" in library
We will need many volunteers to help! We emailed Signup Genius

Tuesday, Nov 14, 5:15pm OSO Meeting (hybrid)
Bring your ideas & hear updates from Mr. Macrino & OSO!

Wednesday, December 13, 5:15pm, OSO Meeting (hybrid)
December ?? (TBD) - Movie Night in the school gym



**Set up your child's
e-wallet at the
Scholastic Book Fair
website**

**so they can buy books
during their library
time next week!**

Find "Oswegatchie School Organization" on Facebook and "Like" the OSO page to see pictures, updates and announcements. Find other important info (calendar, forms, meeting minutes, etc.) about the OSO at our website: bit.ly/OSOwebsite or use the below QR code.

The Oswegatchie School Organization (aka "PTA") is open to any parent, guardian or other caregiver for a current student attending Oswegatchie School. Please contact us if you are interested and feel free to contact us with ideas, thoughts and questions!

Email: oswegatchieschoolorg@gmail.com

Waterford Schools Core Values:

Excellence
Knowledge
Integrity
Responsibility

OSO Website QR Code





**NOW ACCEPTING APPLICATIONS FOR
THANKSGIVING FOOD, HOLIDAY FOOD,
AND HOLIDAY GIFT ASSISTANCE!**



**Scan me for Thanksgiving
Food assistance!**



**Scan me for Holiday Food
& Gift assistance!**

Craft and Vendor Fair

**Free
Admission**

Sponsored by the
Carelot Children's Center PTO

14th ANNUAL
One Stop
Holiday Shopping

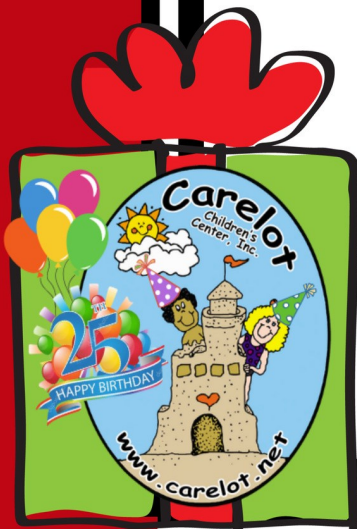
10am-2pm
Sunday, November 5th
East Lyme High School

**Local Crafters, Vendors, Lunch,
Entertainment , Door Prizes & More!**

**Support The Ronald Vlaun
Scholarship Program and Early
Childhood Learning Programs**

www.carelot.net

Get your Holiday Shopping Done in ONE STOP!





Thursday, November 9th, 2023

Join us for our annual 'Stuff the Bus' event! As we approach the holiday season, let's come together as a community to make a difference and spread the spirit of gratitude. Help us fill a school bus with essential Thanksgiving and Holiday meal items to ensure that families in need can enjoy a warm and hearty meal during this special time of year.

Your donations will bring comfort and nourishment to those less fortunate in our community. Let's unite in the true spirit of Thanksgiving by stuffing that bus with love, compassion, and the means to create lasting memories.

We're asking for the following items from our
Waterford Students and families

- 12th Grade – Penne & Pasta Sauce
- 11th Grade – Boxed Mashed Potatoes and Gravy
- 10th Grade – Stuffing + Applesauce
- 9th Grade – Soup + Mac & Cheese
- 6th–8th Grades – Cereal + Oatmeal
- PK-5th Grades – Granola Bars, Cookies, Dessert Boxes, Brownie Mix, etc



Chase the Turkey and his friends will be starting their adventure at 8:30am at WHS, then on to CLMS, GN, OSW and ending at OH!



 WATERFORD
SENIOR SERVICES



WATERFORD
Youth & Family
Services



**WATERFORD
POLICE DEPARTMENT**



**CROWN PIZZA
430 BOSTON POST ROAD,
WATERFORD**

**November 9, 2023
5:00pm - 8:00pm**

**100% PROCEEDS BENEFIT SPECIAL
OLYMPICS CONNECTICUT**



CONNECTICUT LIONS EYE RESEARCH FOUNDATION

KidSight USA Program – District 23C – Connecticut Lions



If you could save a child's sight with the press of a button, wouldn't you?

According to educational experts, **80%** of learning is visual, which means that if your child is having difficulty seeing clearly, his or her learning can be affected. Yet most young children don't get their vision screened until they have problems learning or paying attention in school. By then, it may already be too late. Unless vision problems are detected early and corrected, they risk becoming permanent by age 7.

The **Connecticut Lions Eye Research Foundation (CLERF....of which every Connecticut Lion is a member)** through its *Lions Eye Health Program* has funded **WelchAllyn SPOT® vision screeners** that are available to every Lions Club in District 23C, enabling you to screen **FREE** of charge **all** children from 6 months through grade school with the **primary emphasis on the 0-6 years**.

Last year with the help of the **WelchAllyn SPOT paediatric scanners** in our District, we screened over 10,000 children in pre-schools, kindergartens and elementary schools. The protocols we use are HIPPA compliant and everything needed to carry out this program is funded by CLERF. Thanks to the success of this program, many nurseries and schools, if approached by a Lions club, are now taking advantage of this free service when they see the scope of the screening offered. It is over and above the simple acuity charts used still in schools. Lions Clubs International (LCI) has launched this program nationally as KidSight USA and proudly uses our Connecticut program as one of its models.

Our mission is to ensure that **free vision screening** is given to all kids because every child deserves to learn and see the world clearly! The children in our communities who benefit and there are approximately 250,000 children in our target age range (0-6years) in Connecticut.

If your Lions Club has not taken advantage of this program, you are doing a disservice to the children in your community. This program is easy to implement, the scanner is very user friendly, requiring no cognisant input from the child. Screening results from the past 3 years show that typically 10-12% of kids screened in this area were referred for a follow-up exam by an eye-care professional. **Approximately 5%** of all children in the age group of **6 months to 6 years**, will have amblyopia, a treatable disorder that can result in permanently reduced vision when not addressed at an early age.



Waterford Public Schools/ Waterford Police Department



School Safety Forum

Please join us for an informational night surrounding school safety, the roles of School Resource Officers, definitions of emergency situations and the partnership between the WPD, WPS and home.

November 15, 2023 ~ 6:00 PM

WHS Auditorium, 20 Rope Ferry Road, Waterford

Prize Drawing for Attendees

- ◆ 2 Chromebooks ◆ Pickleball Set
- ◆ 2 Yeti Cups and Backpack



*Informational
Community Partner
tables available from
5:30 pm - 6:00 pm*

IT'S TIME TO GET YOUR LANCER NATION RALLY TOWELS



SCAN ME

**ORDERS DUE
BY 11/6**



**RALLY TOWELS ARE \$5. 00 EACH AND THE PROCEEDS GO TO
THE WHS CLASS OF 2024**

**IF YOU WOULD LIKE TO ORDER YOUR LANCER NATION
RALLY TOWEL, SCAN QR CODE OR
SEE MRS, WOZ OR MRS. BAUMGARTNER ASAP!**

[HTTPS://FORMS.GLE/HQINOWYRER9AJYJA](https://forms.gle/HQINOWYRER9AJYJA)

FAMILY PROGRAMS

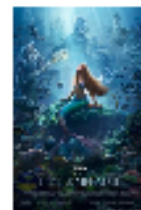
Friday, November 10, 2:00PM - 3:00PM
Tellabration!

Come celebrate the Connecticut Storytelling Center's annual event, Tellabration! This year we welcome Marya Ursin of the Mystic Paper Beasts Theatre Company, who will be performing several stories from SkyTales, using masks, puppets, and movement." All ages are welcome, no registration required.



Friday, November 24, 2:00PM - 4:00PM
Family Movie Matinee

Join us during your school vacation for a family friendly movie. Bring your blankets, pillows, and snacks down to the meeting room for a cozy afternoon. We will be watching *The Little Mermaid* (2023), PG, 135 minutes).



Saturday, November 4, 10:00AM - 11:00AM AND Saturday, November 18, 2:00PM - 3:00PM
Read To Scout

We are excited to welcome a new certified therapy dog to the library! Come practice your reading skills and give Scout a cuddle in the Children's Room. All ages are welcome, no registration required.

Monday, November 6, 4:00PM - 5:30PM
Read To Hodges

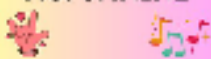
Stop by the Children's Room anytime between 4:00 and 5:30 pm to read to our favorite furry friend, Officer Hodges! No registration required, all ages welcome.



SIGN AND SING WITH MS. JANINE

Saturday, November 18, 10:30 AM - 11:00 AM
Sign and Sing

Join Ms. Janine for Sign and Sing! This fun storytime will include basic signs that both children and their caregivers will benefit from knowing. For ages birth to 5, no registration required. Thank you to CT Humanities for providing funding for this program.



Monday, November 20, 4:00PM - 5:00PM
Fantasy Book Club

You choose the book! Bring your favorite fantasy book to life and make a craft with fellow adventurers. See you in the realm of fantasy! Recommended for ages 5 to 7 years old. Registration is required.



Family Storytime with Ms. Jenna



Mondays, November 6, 13, 20, & 27, 10:30 AM - 11:00 AM
Family Storytime

Get ready to read and get your wiggles out! Join Ms. Jenna at the library for some fun stories, songs, and dancing. Recommended for ages birth to five years old with a caregiver. No registration is required.

Tuesday, November 21, 5:30PM - 6:30PM
Bilingual Pajama Storytime

Join us for a cozy bilingual pajama storytime! Ms Emy will read books and sing songs in English and Spanish. Feel free to dress comfy and bring your favorite stuffed animal and a blanket. No registration required, this program is aimed towards ages birth to five but all families are welcome to join. Thank you to the Community Foundation of Eastern Connecticut for providing funding for this program.



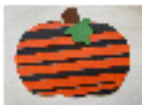
All programs are free and open to the public

DROP IN CRAFTS

Monday, November 13, 4:00 PM - 6:30 PM

Drop in Craft: Paper Strip Pumpkin

Join us in the Children's room to create an adorable fall decor pumpkin craft. Recommended for ages 5 and up, no registration required.



Monday, November 27, 4:00PM - 6:30PM

Drop In STEM Adventure: Spinning top

Join us in the Children's Room between 4:00 and 6:30 pm to create a colorful Spinning top. Recommended for ages 5 and up, no registration required.



Tuesday, November 14, 4:00 PM - 6:00 PM

Drop In Creation Station

Stop by the Children's Room anytime between 4:00 and 6:00 pm for a fun craft and to get your creativity flowing! Recommended for ages 5 and up. No registration required.



Tuesday, November 28, 4:30PM - 5:30PM

LEGO Jam Session

Join the UConn 4-H STEM program for a LEGO Jam Session! Design and construct musical instruments using LEGO building blocks and household materials then learn about sound waves and amplification technology. For ages 7 and up, registration is required. Thank you to the Rotary Club of Waterford for helping to fund this program!



Thursday, November 9, 4:30PM - 5:30PM

DIY Instruments: Strings

Ready to create, play, and dance? Join us for this DIY instrument program in which kids will learn how to make a string instrument from recycled materials! Registration required. Recommended for children ages 6-12 years.



GRAB & GO CRAFTS



Pumpkin Patch
Nov 4 to Nov 17



Pumpkin Pie Slice
Nov 18 to Dec 1

Pick up supplies in the Children's Room to make Grab & Go crafts at home, while supplies last.

Step-by-step video tutorial on our Facebook page

[@waterfordpubliclibrary](https://www.facebook.com/waterfordpubliclibrary).

TEEN CORNER

Thursday, November 2, 5:30 PM - 7:00 PM

Craft Night

Join Miss Ashlee to make a fall themed masterpiece. Recommended for ages 11 and up. Registration is required.

Thursday, November 16, 5:30 PM - 7:00 PM

Teen Drop In Craft

Drop in to the Teen Section of the library anytime between 5:30 and 7:00 pm to make an Autumn themed craft. Ages 12 and up. No registration required.

Friday, November 10, 11:00AM - 12:00PM

Toddler Craft: Feather Letter Turkey

Join us for a fun-filled story and crafting session where toddlers make a turkey and practice spelling their name. For ages 3 to 5 years old, no registration is required.



Friday, November 17, 11:00AM - 11:45AM

Thanksgiving Story and Sensory Play

Join Miss Ashlee for a Thanksgiving story and then explore multiple sensory stations! Recommended for ages 2 to 5 years old with a caregiver. No registration required.



Wednesday, November 29, 11:00 AM - 11:45 AM

Toddler Art

Time to get creative (and maybe a little messy)! This hands on art session is for young ones to explore through process art with the help of their adult. Miss Ashlee will start the session with a short story! For ages 3 to 5 years old, registration is required.



To keep up with all our activities follow us on Facebook and Instagram



[@waterfordpubliclibrary](https://www.facebook.com/waterfordpubliclibrary)



[@waterfordlibraryart](https://www.instagram.com/waterfordlibraryart)

Either call the library to register or go to our Calendar of Events page on our website.
www.waterfordpubliclibrary.org 860-444-5805, Adult Ext 2, Youth Services Ext. 3

***WATERFORD HIGH SCHOOL'S
11TH ANNUAL TURKEY TROT
PROCEEDS BENEFIT THE CLASS OF 2024***



***SATURDAY
NOV 18, 2023
START 09:30 AM***

***GREAT NECK ELEMENTARY
SCHOOL, 6 GOSHEN RD,
WATERFORD, CT 06385***


***COST IS \$35 PER PERSON
SIGN UP USING THE QR CODE***






UPDATED POLICY FOR PURCHASING A CHROMEBOOK CHARGER

Replacement Chromebook chargers for school-issued devices should now be purchased from MySchoolBucks. Once payment has processed, the charger will be delivered to the student's school. Please allow for fee processing and delivery time.



Store
Shop your school for books, clothes, and more.

Featured Items



Replacement Charger

[View Details](#)





INTRODUCING TO FAMILIES OF 4TH - 12TH GRADERS...

The Waterford Public School district is excited to announce its partnership with Securly in safeguarding our students, your children. Securly Home was chosen because we shared a vision of a safer, more productive digital world for our students.

Now parents of students in grades 4-12 can get the same peace of mind when school devices come home. See your child's online activity during after-school hours, pause your child's device, and turn off online access.

Through this partnership, the students of Waterford will be protected everywhere, on any school-issued device. You should have received a welcome email that provided you with instructions on how to download the app and connect with your child's online activity, so please be sure to locate it if you missed it!

Further information about Securly Home can be found on our WPS district website (Technology > One-to-One Device Program Information). There are resources there to help you become more familiar with Securly Home and how to use it.



Securly Home



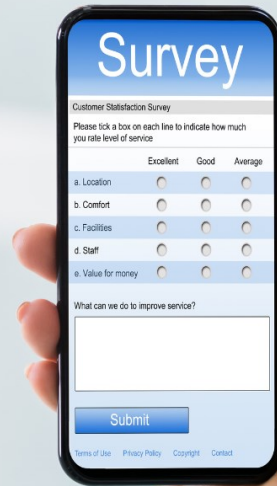
Mobile App



Monitor Your Child's Online
Activity During After School
Hours



We want to hear from you!



Please complete our online survey



VENDORS NEEDED

ARTISAN & VENDOR FAIR

WATERFORD HIGH SCHOOL
WATERFORD, CT

PROFITS SUPPORT THE CLASS OF 2025

DEC
3rd



10-3pm

[HTTPS://FORMS.GLE/
3LNFRN1NNA75JXSUA](https://forms.gle/3LNFRN1NNA75JXSUA)



Every year, 18,000 patients are diagnosed with life-threatening blood cancers or other blood disorders that could be cured or treated with a blood stem cell transplant. But 70% of them don't have a fully matched donor in their family. They depend on Be The Match® to find an unrelated donor. *Adapted from [//my.BeTheMatch.org/strongestboy](http://my.BeTheMatch.org/strongestboy)*

The Waterford community, including families within our district (see below), have been impacted by these cancers and are looking to raise awareness regarding the Be The Match® program and the need for donors for bone marrow transplants.

Please visit [//my.BeTheMatch.org/StrongestBoy](http://my.BeTheMatch.org/StrongestBoy) for more information on this life saving program and for the process to become a donor.



YOU COULD BE THE CURE FOR TIAGO

Tiago, Waterford, CT
searching patient

Join the Be The Match Registry®
on behalf of Tiago today!

BE  THE MATCH®



Pre-K Breakfast and Lunch menus—November

For the 23-24 school year, students qualified for **Reduced status** will receive breakfast and lunch at no cost!

NOVEMBER 2023

* 1 daily Breakfast at "no cost" for all students this school year!
LUNCH \$3.25 MILK ONLY \$.75

WATERFORD SCHOOLS PRE-K BREAKFAST AND LUNCH

Monday	Tuesday	Wednesday	Thursday	Friday
		1 WG Cereal 100% Fruit juice Milk Pasta with meatballs Green beans Garlic knot Diced peaches Milk	2 Breakfast pizza 100% Fruit juice Milk Chicken nuggets Steamed Red potatoes Sliced carrots Fresh Fruit Milk	3 Mini pancakes Applesauce Milk Soft taco Fiesta beans Pineapple chunks Milk
6 Yogurt/Giant Goldfish graham 100% Fruit juice Milk Pizza Applesauce cup Milk Garden Salad Ranch Dressing	7 Professional Development Day! -No School-	8 WG Maple Waffle Banana Milk Chicken "Drummies" Golden corn Dinner Roll Apple sauce Milk	9 WG Cereal 100% Fruit juice Milk Sun butter & Jelly Sandwich Mozzarella String cheese Cucumber slices Milk	10 School Holiday
13 WG Cereal 100% Fruit juice Milk Macaroni & Cheese Steamed broccoli Goldfish crackers Diced peaches Milk	14 Cheese omelet Orange smiles Milk "BRUNCH FOR LUNCH" French toast Sausage links Potato Tots Banana Milk	15 2oz Blueberry Muffin Apple slices Milk Pizza Bites Marinara sauce Salad Orange smiles Milk	16 Pumpkin Bread 100% Fruit Juice Milk Holiday Dinner! Turkey & gravy Mashed potatoes Green beans Dinner roll Craisins Milk	17 Hardboiled egg Goldfish graham 100% Fruit juice Milk Cheeseburger Baked beans Sweet potato gems Diced peaches milk
20 Cinnamon French Toast Applesauce cup Milk Cheese Pizza Cucumber slices Fresh fruit choice Milk	21 Banana Bread 100% Fruit juice Milk Chicken Nuggets Potato Wedges Corn Diced pear Milk	22 School Holiday	23 School Holiday	24 School Holiday
27 Mini pancakes Applesauce cup Milk Cheesy Pull-a-parts Marinara sauce Green beans Orange smile Milk	28 2 oz. Corn muffin 100% Fruit juice Milk Beef & Cheese Nachos Golden corn w/Black beans Pineapple cup Milk	29 Oatmeal breakfast Round 100% Fruit juice Milk Chicken tenders Sweet pot fries Applesauce Dinner roll Milk	30 2 oz. blueberry muffin 100% Fruit juice milk Chicken & Broccoli Rajini Alfredo Garlic knot Diced peaches Milk	

Please visit www.myschoolbucks.com to add funds to your child's account.

All grain-based items offered are whole-grain rich which means that at least 50% of the grains in the item are *whole grain* (WG), all other grains are enriched
A VARIETY OF FRESH FRUITS OFFERED DAILY "Thoroughly cooking meats, poultry, seafood, shellfish or eggs reduces the risk of foodborne illness"
Alternate Choice Yogurt Meal available daily = Yogurt, Mozzarella string cheese, baby carrots, craisins, goldfish crackers, dinner roll, milk
Milk choices: 1% White or Fat Free Flavored **THIS INSTITUTION IS AN EQUAL OPPORTUNITY PROVIDER** *Menus are subject to change

BREAKFAST

NOVEMBER 2023
WATERFORD SCHOOLS K-12

Breakfast at no charge to all students this school year! **Milk Only: \$.75**
Second Breakfast Price: \$2.75

One FREE breakfast for all students daily.

Monday	Tuesday	Wednesday	Thursday	Friday
		Pumpkin Bread or Assorted WG Cereal Or WG Muffin Fresh Fruit Choice 100% Fruit Juice Milk	Breakfast Pizza or Assorted WG Cereal Or WG Muffin Fresh Fruit Choice 100% Fruit Juice Milk	Mini pancakes or Assorted WG Cereal Or WG Muffin Fresh Fruit Choice 100% Fruit Juice Milk
Yogurt & Goldfish Grahams Or Assorted WG Cereal Or WG Muffin Fresh Fruit Choice 100% Fruit Juice Milk	Professional Development Day! -No School-	Maple waffle or Assorted WG Cereal Or WG Muffin Fresh Fruit Choice 100% Fruit Juice Milk	Cinnamon Roll or Assorted WG Cereal Or WG Muffin Fresh Fruit Choice 100% Fruit Juice Milk	School Holiday Wellness Tip: Be sure to keep hydrated Drink plenty of water!
Apple Frudel or Assorted WG Cereal Or WG Muffin Fresh Fruit Choice 100% Fruit Juice Milk	Cheese omelet Taco Assorted WG Cereal Or WG Muffin Fresh Fruit Choice 100% Fruit Juice Milk	Cinnamon French toast Assorted WG Cereal Or WG Muffin Fresh Fruit Choice 100% Fruit Juice Milk	Pancake bites or Assorted WG Cereal Or WG Muffin Fresh Fruit Choice 100% Fruit Juice Milk	Egg & Cheese sandwich Or Assorted WG Cereal Or WG Muffin Fresh Fruit Choice 100% Fruit Juice Milk
Banana Bread Assorted WG Cereal Or WG Muffin Fresh Fruit Choice 100% Fruit Juice Milk	WG Goody Ring Assorted WG Cereal Or WG Muffin Fresh Fruit Choice 100% Fruit Juice Milk	School Holiday Wellness Tip: Eat at least one fruit or vegetable at every meal	School Holiday Wellness Tip: Go for a brisk 20 min walk or bike ride every day!	School Holiday Wellness Tip: Make sure to get plenty of sleep for a healthy body!
Mini pancakes or Assorted WG Cereal Or WG Muffin Fresh Fruit Choice 100% Fruit Juice Milk	Egg & Cheese sandwich Or Assorted WG Cereal Or WG Muffin Fresh Fruit Choice 100% Fruit Juice Milk	Oatmeal Breakfast Round & Mozzarella String cheese sticks Or Assorted WG Cereal Or WG Muffin 100% Fruit Juice Milk	Banana Bread or Assorted WG Cereal Or WG Muffin Fresh Fruit Choice 100% Fruit Juice Milk	

Please visit www.myschoolbucks.com to add funds to your child's account.




All Grain-based items offered at breakfast are Whole Grain Rich which means that at least 50% of the grains in the items are whole grain and all other grains are enriched
 *Milk Choices: 1% white or Fat Free Flavored * A variety of breakfast options offered daily * All breakfast includes 1 cup of fruit & 8 oz. Milk * Menu subject to change
 This institution is an equal opportunity provider "Thoroughly cooking meats, poultry, seafood, shellfish or eggs reduces the risk of foodborne illness"

LUNCH

NOVEMBER 2023
WATERFORD SCHOOLS K-12

LUNCH PRICES
Elementary \$3.25
CLMS \$3.50
WHS \$3.75
Second Meal: \$4.25 - Adult Meal \$5.00

For the 23-24 school year, students qualified for **Reduced** status will receive one lunch at no cost per day

Monday	Tuesday	Wednesday	Thursday	Friday
		Penne' Pasta 1 Meatballs in marinara sauce Green beans Garlic knot Diced peaches Milk	Taco salad with Cheese 2 Fiesta beans mini corn muffin Tostito chips salsa cup Pineapple chunks Milk	Cheese Pizza 3 Baby carrots Ranch Cucumber slices Apple juice Fresh fruit choice Milk
Macaroni & Cheese 6 Steamed broccoli Baby carrots Goldfish crackers Diced pears Milk	Professional Development Day! -No School-	Chicken Drumsticks 8 Smile fries Golden corn Dinner Roll Apple sauce Milk	Pizza Bites 9 Marinara sauce Cup Spinach & Tomato Salad Orange smiles Milk	School Holiday Wellness Tip: Eat at least one full serving of fruit or vegetable at every meal
Chicken Patty on a WG Roll 13 Potato Wedges Golden corn Diced pear Milk	French toast Syrup cup 14 Sausage links Potato tots Mango juice Fresh Fruit Milk	Pizza 15 Garden Salad Baby carrots Ranch Dressing 100% fruit Juice Milk	Holiday Dinner! 16 Turkey & gravy Mashed potatoes Green beans Craisins Pumpkin bread Milk	Cheeseburger 17 Baked beans Sweet potato gems Diced peaches Milk
Chicken nuggets 20 Steamed Red potatoes Sliced carrots Dinner roll Fresh Fruit Choice Milk	Hotdog on a WG Roll 21 Baked beans Oven fries Sidekick =Fzn 100% Juice Cold Milk	School Holiday 22	School Holiday 23	School Holiday 24
Cheesy Pull a parts 27 Marinara sauce cup Green beans WG Cookie Orange smiles Milk	Beef & Cheese Nachos 28 Black beans Golden corn Salsa corn muffin Pineapple cup Milk	Chicken tenders 29 with dipping' sauce Sweet pot fries Mango juice Applesauce Dinner roll Milk	Chicken Rotini Alfredo 30 Steamed Broccoli Garden salad /Italian dressing Garlic knot Diced peaches Milk	

Please visit www.myschoolbucks.com to add funds to your child's account.

All grain-based items offered at lunch are whole-grain rich which means that at least 50% of the grains in the item are whole grain (WG), all other grains are enriched
A VARIETY OF FRESH FRUITS OFFERED DAILY "Thoroughly cooking meats, poultry, seafood, shellfish or eggs reduces the risk of foodborne illness"
 Alternate Choice Yogurt Meal available daily = Yogurt, Mozzarella string cheese, baby carrots, raisins, goldfish crackers, dinner roll, milk
 Milk choices: 1% White or Fat Free Flavored Additional Fruit & Vegetables offered daily **THIS INSTITUTION IS AN EQUAL OPPORTUNITY PROVIDER** *Menus are subject to change

August 2023

Mon	Tue	Wed	Thu	Fri
	1	2	3	4
7	8	9	10	11
14	15	16	17	18
21	22	23	24	25
28*	29*	FD	31	

(2 day ~ 2 cumulative)

- 8/28 - ± Staff Convocation
- 8/29 - * PD - No School - PK-12
- 8/30 - First Day of School

September 2023

Mon	Tue	Wed	Thu	Fri
				1
SH	5	6	7	8
11	12	13	14	15
18	19	20	21	22
SH	26	27	28	29

(19 days ~ 21 cumulative)

- 9/4 - School Holiday (Schools Closed)
- 9/25 - School Holiday (Schools Closed)

October 2023

Mon	Tue	Wed	Thu	Fri
2	3	4	5	6
SH	10	11	12	13
16	17	18	19	20
23	24	25	26	27
30	31			

(21 days ~ 42 cumulative)

- 10/9 - School Holiday (Schools Closed)

November 2023

Mon	Tue	Wed	Thu	Fri
		1	2	3
6	PD	8	9	SH
13	14	15	16	17
20	21	School Holiday		
27	28	29	30	

(17 days ~ 59 cumulative)

- 11/7 - * PD No School for Students - PK-12
- 11/10 - School Holiday (Schools Closed for Students), P/T Conferences
- 11/22 - 11/24 - School Holiday (Schools Closed)

December 2023

Mon	Tue	Wed	Thu	Fri
				1
4	5	6	7	8
11	12	13	14	15
18	19	20	21	22
School Holiday				

(16 days ~ 75 cumulative)

- 12/22 - Early Dismissal PK-12
- 12/25 - 12/29 - School Holiday (Schools Closed)

January 2024

Mon	Tue	Wed	Thu	Fri
SH	2	3	4	5
8	9	10	11	12
SH	16	17	18	19
22	23	24	25	26
29	30	31		

(21 days ~ 96 cumulative)

- 1/1 - School Holiday (Schools Closed)
- 1/15 - School Holiday (Schools Closed)
- 1/18-1/23 - ** Midterm Exams: Early Dismissal 9-12

February 2024

Mon	Tue	Wed	Thu	Fri
			1	2
5	6	7	8	9
12	13	14	15	16
SH		21	22	23
26	27	28	29	

(19 days ~ 115 cumulative)

- 2/19-2/20 - School Holiday (Schools Closed)

March 2024

Mon	Tue	Wed	Thu	Fri
				1
4	5	6	PT	8
11	12	13	14	15
18	19	20	21	22
25	26	27	28	SH

(20 days ~ 135 cumulative)

- ** 3/7 - P/T Conferences: Early Dismissal PK-12
- 3/29 - School Holiday (Schools Closed)

April 2024

Mon	Tue	Wed	Thu	Fri
1	2	3	4	5
School Holiday				
15	16	17	18	19
22	23	24	25	26
29	PD			

(16 days ~ 151 cumulative)

- 4/8 - 4/12 - School Holiday (Schools Closed)
- 4/30 - * PD No School for Students - PK-12

May 2024

Mon	Tue	Wed	Thu	Fri
		1	2	3
6	7	8	9	10
13	14	15	16	17
20	21	22	23	24
SH	28	29	30	31

(22 days ~ 173 cumulative)

- 5/27 - School Holiday (Schools Closed)

June 2024

Mon	Tue	Wed	Thu	Fri
3	4	5	6	7
10	11	LD	13	14
17	18	19	20	21
24	25	26	27	28

(8 days ~ 181 cumulative)

- 6/6 - 6/11 - ** Final Exams: Early Dismissal 9-12
- 6/11 - ** Early Dismissal PK-12
- 6/12 - Last Day of School Early Dismissal PK-12



NOTE: Snow days will be added onto the school year as needed.

BOE Approved: December 8, 2022

Revised: June 22, 2023

± Staff Convocation is for all staff of the Waterford Public Schools

* Professional Development is for Administrators, Teachers, Paraprofessionals 8 AM-3 PM

** Full day for Paraprofessionals

2023-24 Elementary Letter Rotation Schedule

August 2023				
Mon	Tue	Wed	Thu	Fri
		30 A	31 B	

September 2023				
Mon	Tue	Wed	Thu	Fri
				1 C
	5 D	6 A	7 B	8 C
11 D	12 A	13 B	14 C	15 D
18 A	19 B	20 C	21 D	22 A
	26 B	27 C	28 D	29 A

October 2023				
Mon	Tue	Wed	Thu	Fri
2 B	3 C	4 D	5 A	6 B
	10 C	11 D	12 A	13 B
16 C	17 D	18 A	19 B	20 C
23 D	24 A	25 B	26 C	27 D
30 A	31 B			

November 2023				
Mon	Tue	Wed	Thu	Fri
		1 C	2 D	3 A
6 B		8 C	9 D	
13 A	14 B	15 C	16 D	17 A
20 B	21 C			
27 D	28 A	29 B	30 C	

December 2023				
Mon	Tue	Wed	Thu	Fri
				1 D
4 A	5 B	6 C	7 D	8 A
11 B	12 C	13 D	14 A	15 B
18 C	19 D	20 A	21 B	22 C*

January 2024				
Mon	Tue	Wed	Thu	Fri
	2 D	3 A	4 B	5 C
8 D	9 A	10 B	11 C	12 D
	16 A	17 B	18 C	19 D
22 A	23 B	24 C	25 D	26 A
29 B	30 C	31 D		

February 2024				
Mon	Tue	Wed	Thu	Fri
			1 A	2 B
5 C	6 D	7 A	8 B	9 C
12 D	13 A	14 B	15 C	16 D
		21 A	22 B	23 C
26 D	27 A	28 B	29 C	

March 2024				
Mon	Tue	Wed	Thu	Fri
				1 D
4 A	5 B	6 C	7 D*	8 A
11 B	12 C	13 D	14 A	15 B
18 C	19 D	20 A	21 B	22 C
25 D	26 A	27 B	28 C	

April 2024				
Mon	Tue	Wed	Thu	Fri
1 D	2 A	3 B	4 C	5 D
15 A	16 B	17 C	18 D	19 A
22 B	23 C	24 D	25 A	26 B
29 C				

May 2024				
Mon	Tue	Wed	Thu	Fri
		1 D	2 A	3 B
6 C	7 D	8 A	9 B	10 C
13 D	14 A	15 B	16 C	17 D
20 A	21 B	22 C	23 D	24 A
	28 B	29 C	30 D	31 A

June 2024				
Mon	Tue	Wed	Thu	Fri
3 B	4 C	5 D	6 A	7 B
10 C	11 D*	12 A*		



■ No School
* Early Dismissal